



INTRODUCTION OF
HONG KWANG ELECTRODEPOSITION COATING CO., LTD.

COMPANY PRINCIPALS

Sincerity and credibility
 Fine quality products
 On-time delivery
 Reasonable price
 Continuous improvement

OUR OBJECTIVES(TAI WAN)

Increasing product quality, decreasing
 product returns.
 Satisfying customer requests, reducing
 customer complains.

OUR OBJECTIVES(THAI LAND)

Excellent Quality,
 Customer Satisfaction and
 Organization Continual Improvement.

INDEX

ABOUT US	4
HK Background	
HK Highlights	
Management Organization	
Our Products	
Main Equipment	
Main Laboratory Equipment	
ABOUT E.D.	10
What is Electro Deposition	
HOW WE WORK	11
Quality Slogan	
Working Progress	
Purchasing Management Chart	
Producing Management Chart	
Quality Inspection Chart	
Customer Claim Handling	
HOW TO FIND US	16
Contact Information	
Map	



HK BACKGROUND



1985

Hon Kwang Co., Ltd. Is established

1986

Quality testing lab is built

1988

Waste water treatment system is built

1997

Hon Yu Co., Ltd. Is established



2003

Merged Hon Kwang Co., Ltd. and Hon Yu Co., Ltd. to Hong Kwang Electrodeposition Coating Co., Ltd., which includes the ChangHua Factory and Hua-Tan Factory.

2004

Hong Kwang factory opens in Thailand



The main business of Hong Kwang is coating for automobiles, motorcycles, bicycles, hand tools and any other metal pieces. Since 2001, Hong Kwang has also been involved in the area of aluminum production. Also in 2001, Hong Kwang opened its research and development division.

Over the last 20 years, Hong Kwang has established itself as a consistent and productive organization. We operate based on our key principals: providing trustworthy and sincere service, offering high quality products, on-time delivery and reasonable prices. We will continue to improve our production processes and service to our customers, who have supported us over the years.



COMPANY HIGHLIGHTS

AREA

Changhua Factory: About 1,000

Huatan Factory: About 900

Thailand Factory: About 900

NUMBER OF EMPLOYEES AND VEHICLES

Taiwan factory:

Approx. 100 employees and 11 vehicles

Thailand factory:

About 100 employees and 10 vehicles

CAPITAL INVESTMENT

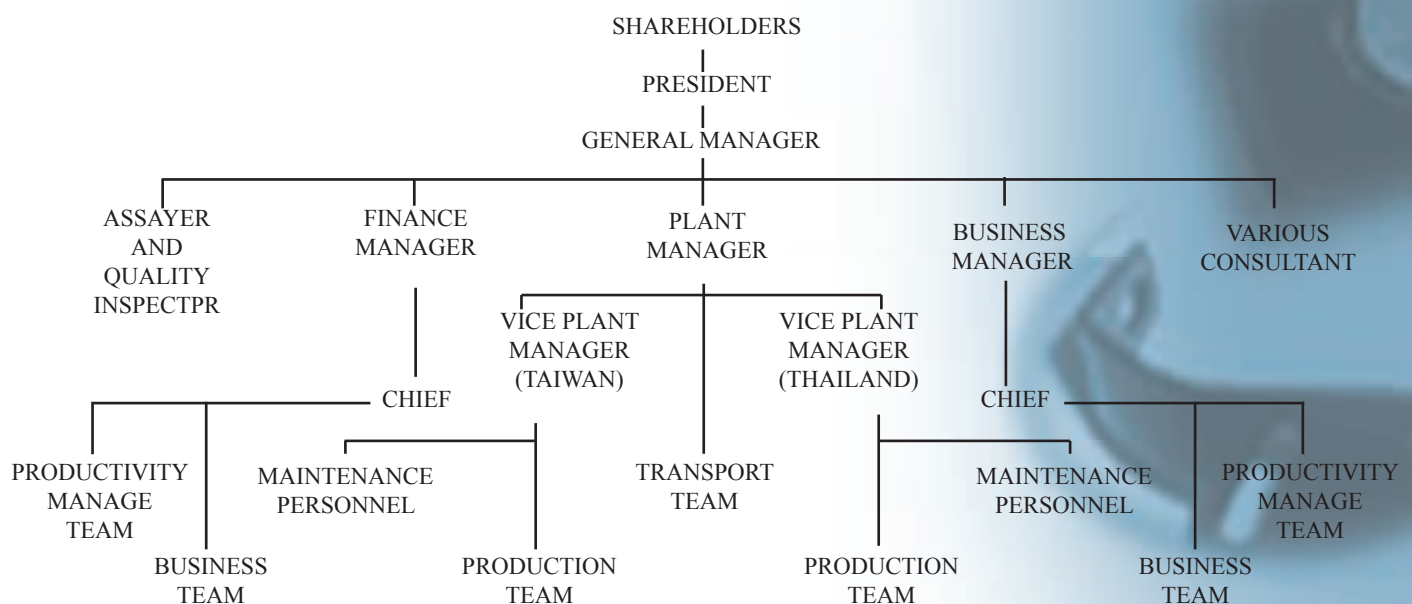
Taiwan factory: TWD 24 million

Thailand factory: THB 48 million

COMPANY VISION

We are not only improving ourselves in regards to product quality and technology development, but also extending our product line to a wider area. We are looking forward to establishing a business that covers all areas of the metal coating business in the near future.

MANAGEMENT ORGANIZATION



OUR PRODUCTS

ED coating can be applied to spare parts of cars, scooters, and virtually any other metallic surface or part.





You can also assign to coat part of your product.



MAIN EQUIPMENT



CONVEYER SYSTEM



CONVEYER SYSTEM

MAIN LABORATORY EQUIPMENT



HARDNESS TEST



CRISSHATCH TEST



ELECTRIC BALANCE



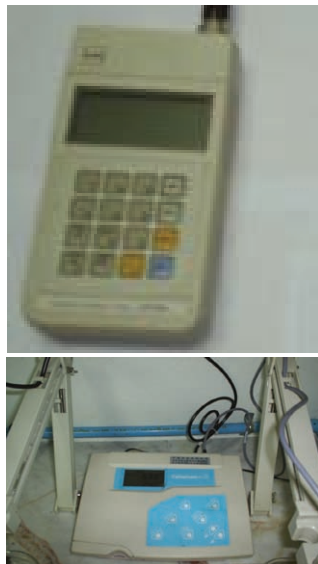
BLASTING MACHINE



E.D. TANK



HOT TEMPERATURE BOX



TOP: THICKNESS TEST
BOTTOM: PH/ E. CONDUCTIVITY
TEST



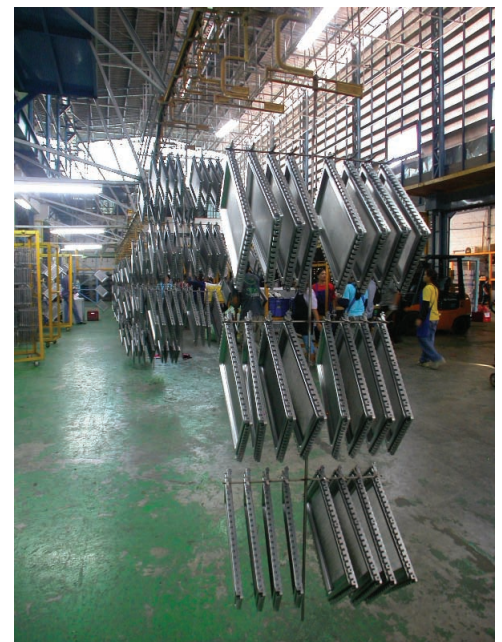
SALT SPARY TEST

WHAT IS ELECTRO DEPOSITION

ED coating is short for ElectroDeposition coating. Simply speaking, it refers to the process of using electrical current to deposit paint smoothly onto a metal surface.

SOME ADVANTAGES OF ED COATING ARE:

1. automated coating system decreases work time and raises production efficiency
2. produces smooth coat of uniform thickness
3. able to coat awkward areas that normal spray paint can't reach
4. more adhesive and rustproof
5. UF system recycles and reuses paint
6. Coated materials are inflammable
7. Process poses little danger and low environmental impact ED coating can be applied to spare parts of cars, scooters, and virtually any other metallic part.



QUALITY SLOGAN

- Improving productivity and quality is the foundation.
- Good quality lead to less customer complain.
- Following the principle is the first step to success.
- Following procedure results in good quality.
- Brainstorming results in great power.
- Any little idea drives the development.
- “To check again” is the secret of quality assurance.
- Good quality will bring us more customers.
- Quality is not only words, it has to be acted.
- The continuous improvement is the way to maintain quality.
- Prevent from happening again is the key to solve the problem.
- It is wasting time and money to solve the same problem again and again.
- You do and I do, to maintain quality depends on the cooperation from everyone.
- Customers’s comment and suggestion are keys to our devel
opment.
- Bringing customer the best ever quality is on top of our must list.



WORKING PROGRESS



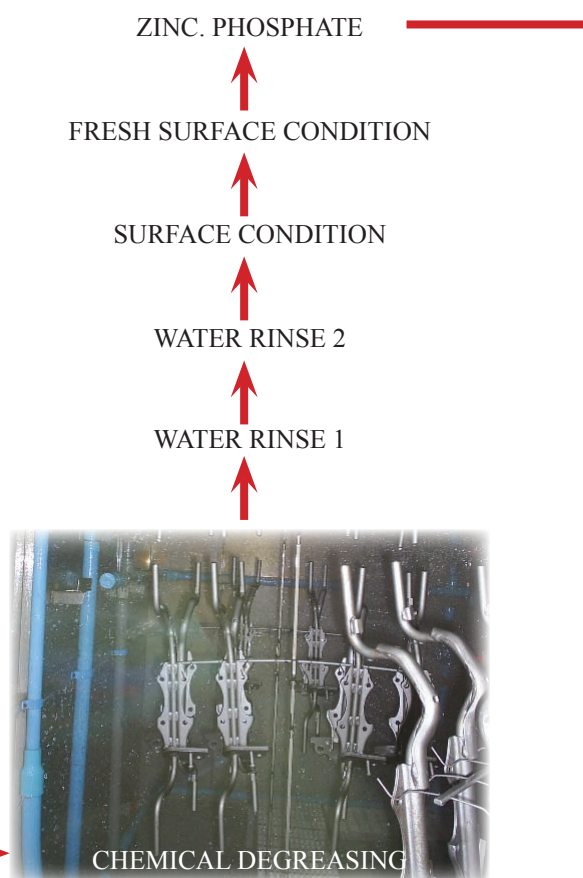
SURFACE DISTINDUISH

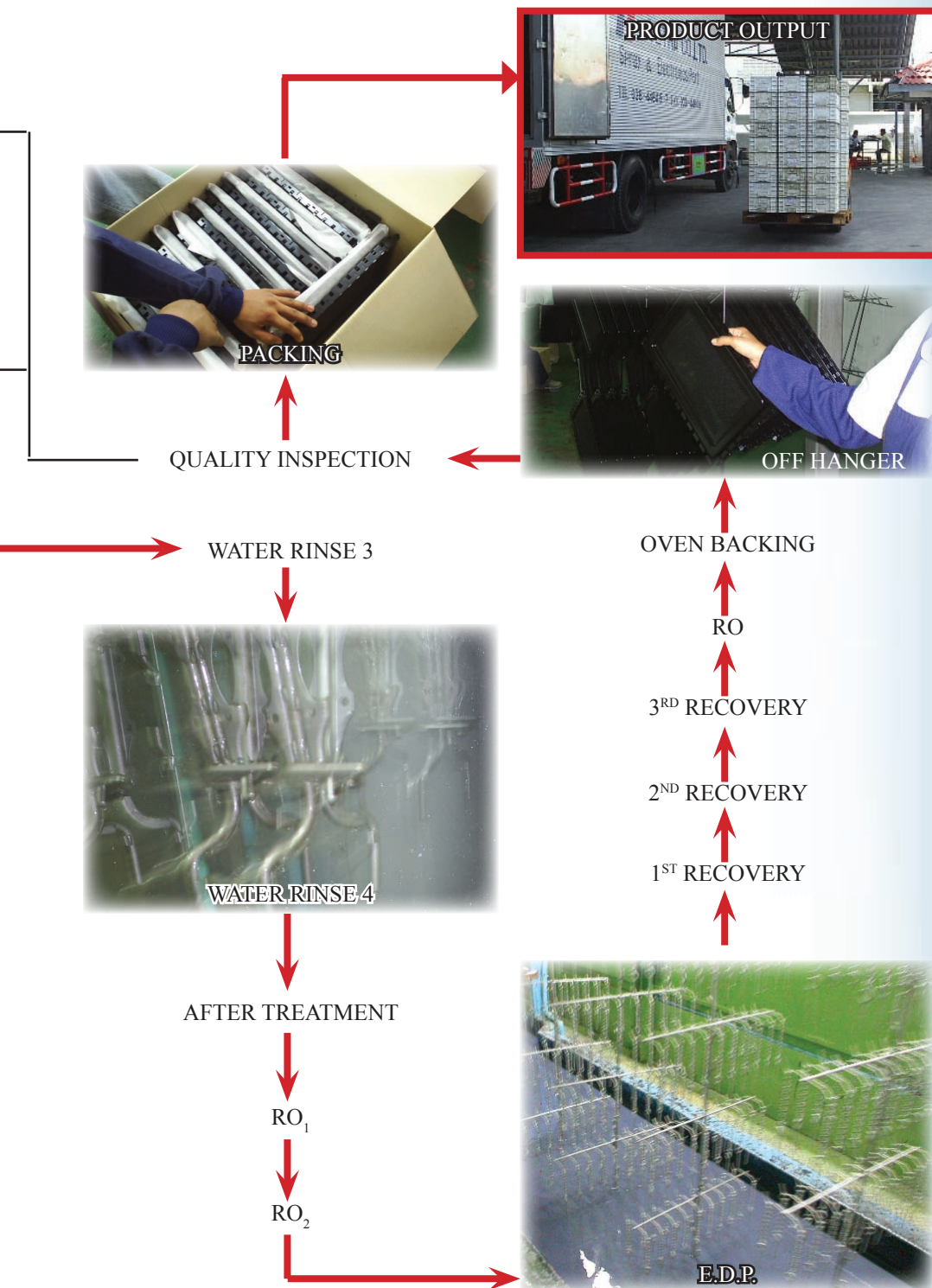
ARRANGE SCHEDULE



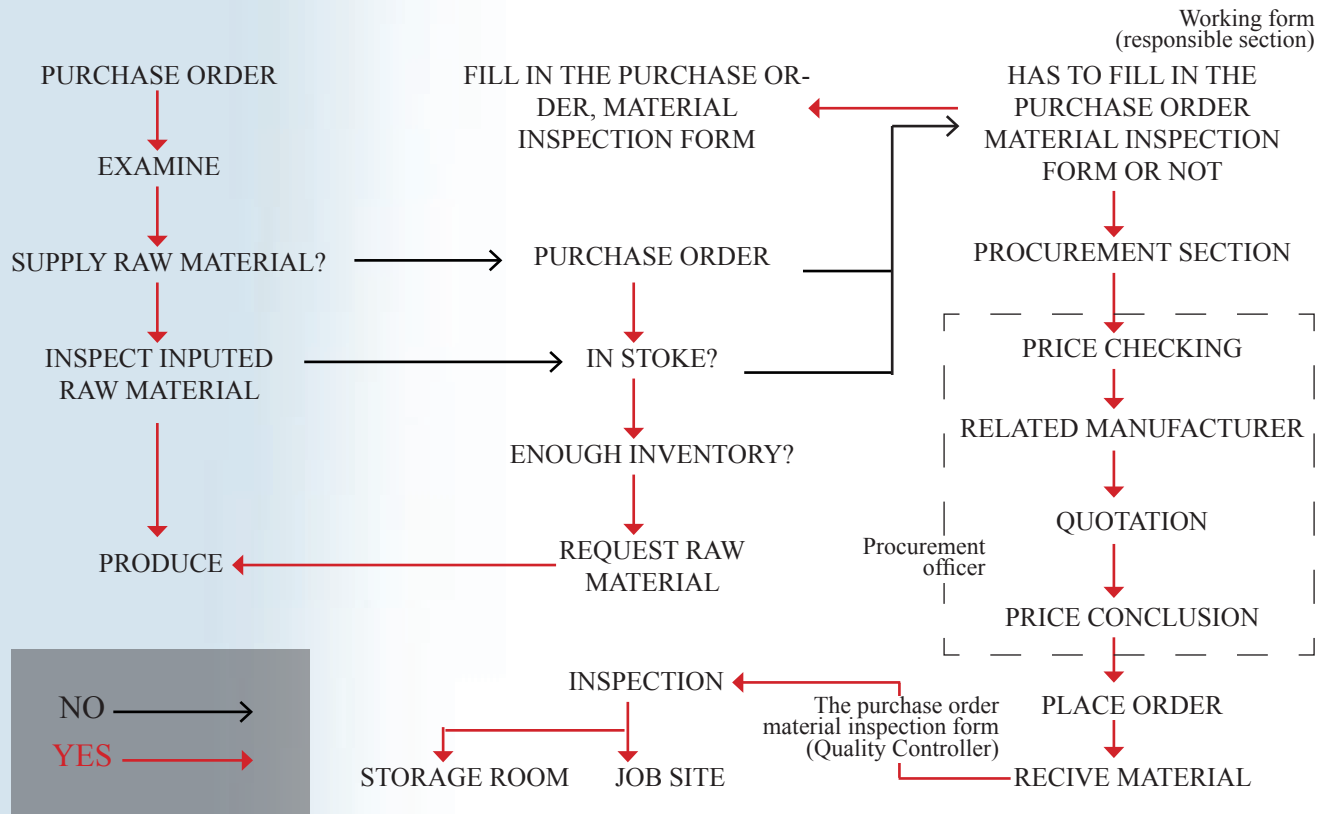
PREDEGREASING 1

PREDEGREASING 2

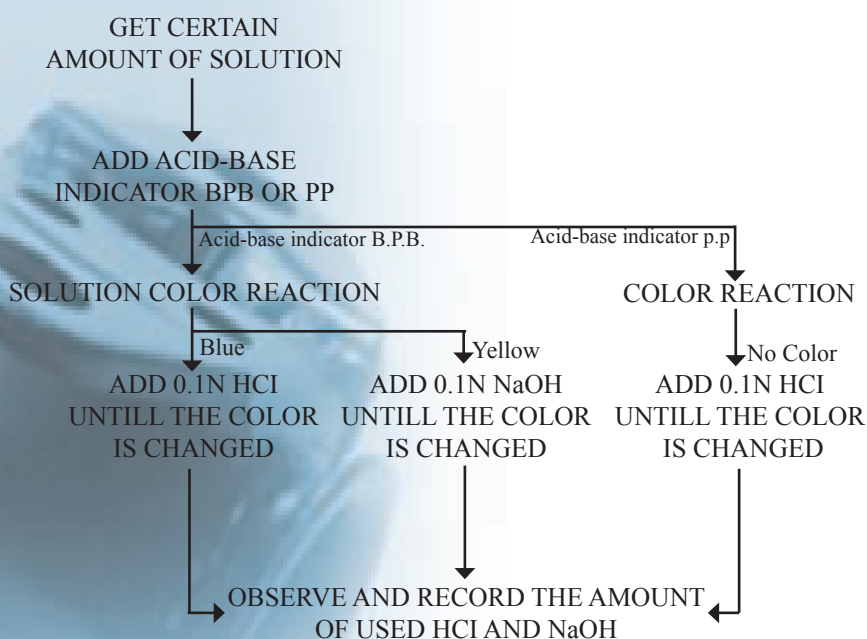




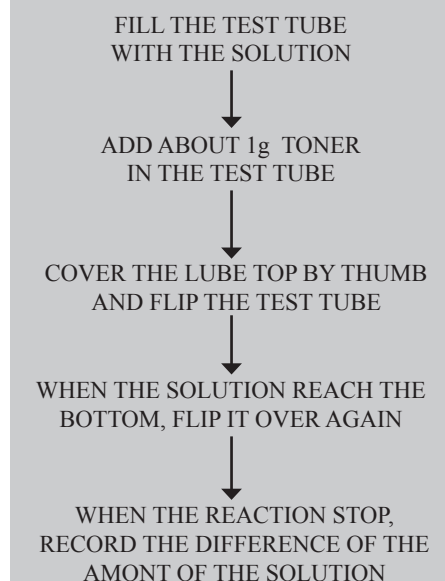
PURCHASING MANAGEMENT CHART



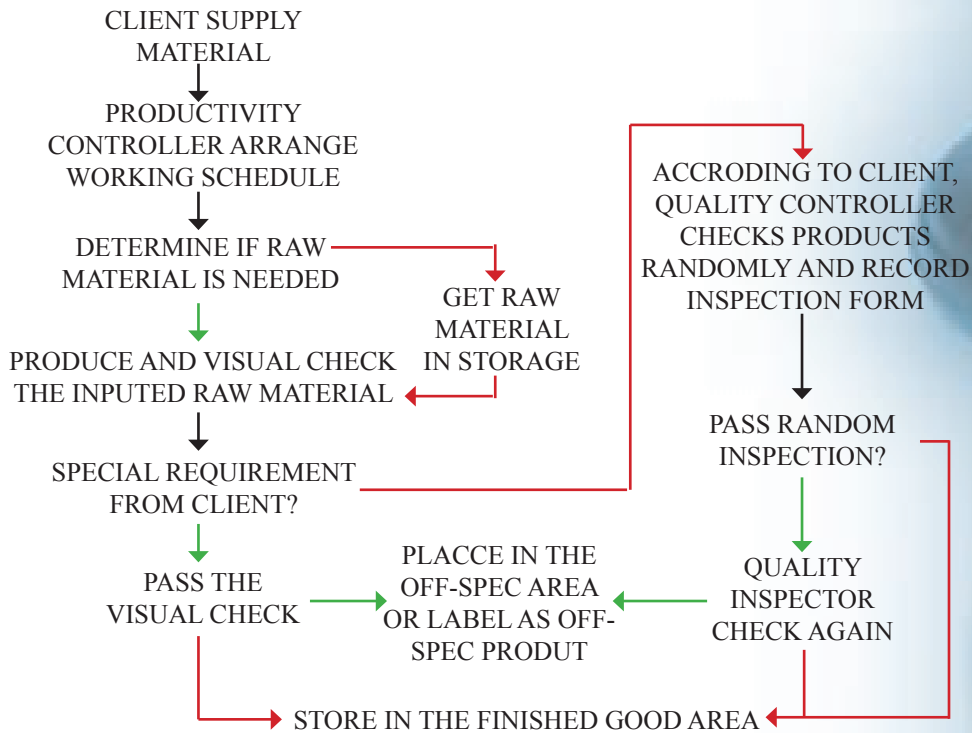
PRODUCING MANAGEMENT CHART



Toner Examination Progress

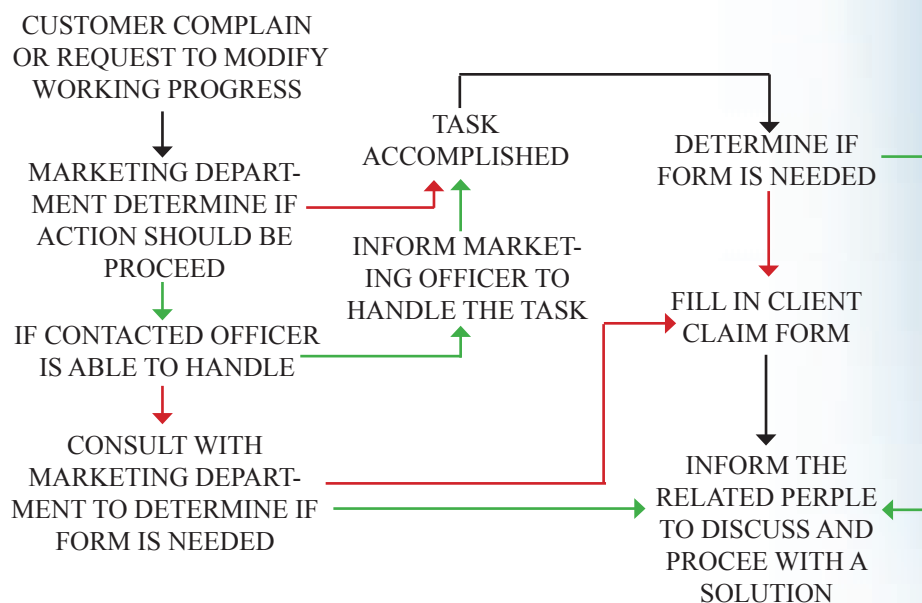


QUALITY INSPECTION CHART



NO →
YES →
PROGRESS →

CUSTOMER CLAIM HANDLING



NO →
YES →
PROGRESS →

HOW TO FIND US

CONTACT INFORMATION

Address

370/1 Moo 4 Bangpoo industrial estate Rd.
Tumbon Prakesa, Ampur Muang,
Samutprakarn, Thailand

Telephone

+66-2-709-3757-8

Fax

+66-2-709-3752

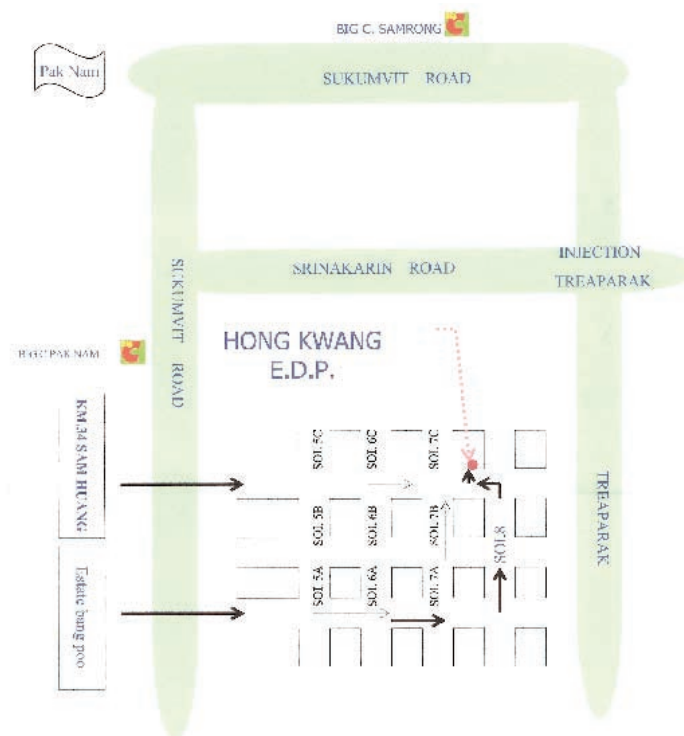
E-mail

SALES.THAI@hongkwang.com.tw

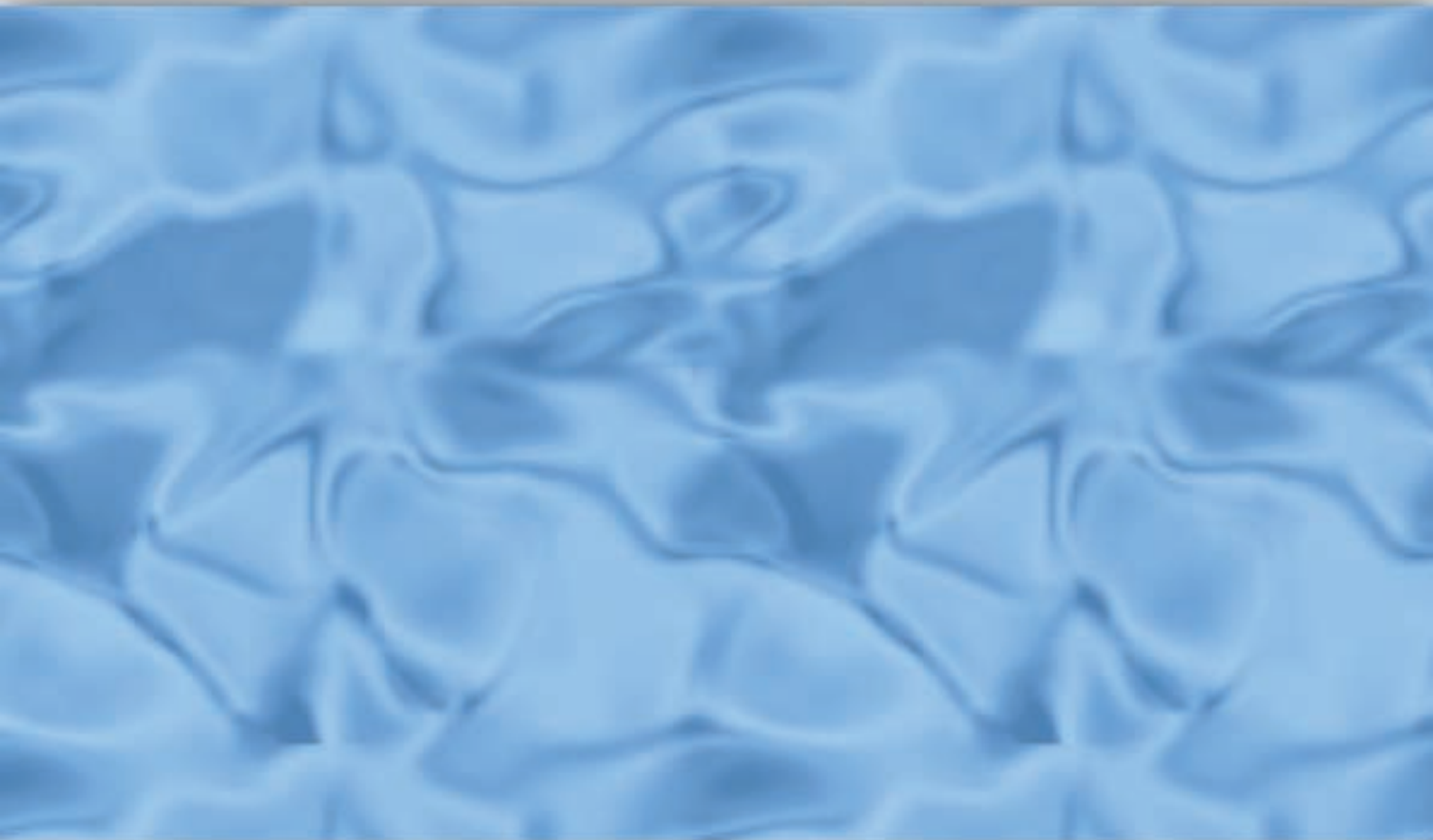
Website

www.hongkwang.com.tw / www.hongkwang.com

MAP



THANK YOU FOR YOUR TIME! YOUR COMMENTS AND SUGGESTIONS
ARE THE GREATEST CONTRIBUTIONS TO THE GROWTH AND SUCCESS
OF HONG KWANG!



HONG KWANG ELECTRODEPOSITION COATING CO., LTD.
ISO 9001 QUALITY STANDARD CERTIFIED COMPANY